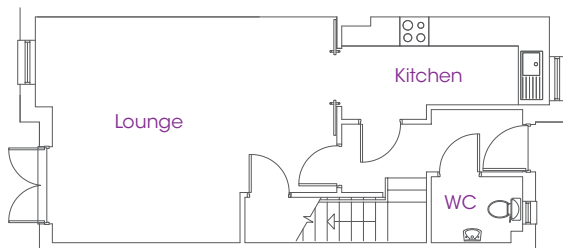
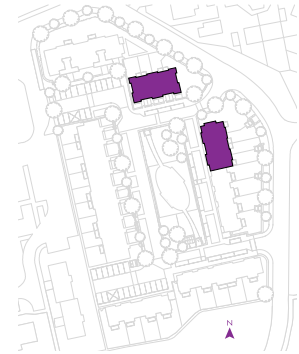


# Echline Court



## 4 Bed Townhouse

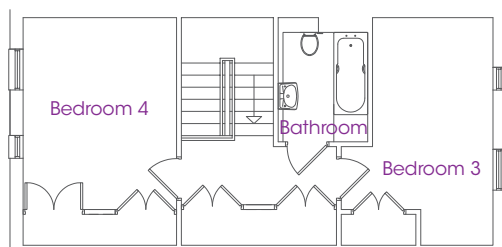


Plot 14  
Plot 15  
Plot 16  
Plot 37  
Plot 38\*

	Metric	Imperial
Ground Floor		
Kitchen	1.80 x 4.20	5'10" x 13'9"
Lounge	4.60 x 5.80	15'1" x 19'0"
WC	1.30 x 1.80	4'X3" x 5'10"



First Floor		
Bedroom 1	3.60 x 3.60	11'9" x 11'9"
En-Suite	1.00 x 2.60	3'3" x 8'6"
Bedroom 2	3.90 x 3.50	12'9" x 11'5"



Second Floor		
Bedroom 3	4.70 x 2.40	15'5" x 7'10"
Bedroom 4	3.90 x 3.10	12'9" x 10'2"
Bathroom	2.50 x 1.80	8'2" x 5'10"

\* The above plans are for Plots 14, 16 & 37. Plans for Plot 38 are a mirror image of those shown

Disclaimer: (1) the specification and materials may vary from those shown; (2) all descriptions, dimensions, references to condition and necessary permissions for use and occupation, and other details are given without responsibility and any intending purchasers should not rely upon them as statements or representations of fact but must satisfy themselves by inspection or otherwise as to the correctness of each of them and are advised to do so; (3) all images and other visuals shown are for illustrative purposes only; (4) although every care has been taken to ensure the accuracy of all information, contents do not form part nor shall be deemed to form part of, or constitute, a representation warranty, or part of any contract. Details should be confirmed with the selling agent and the interested party is advised to consult their solicitor.